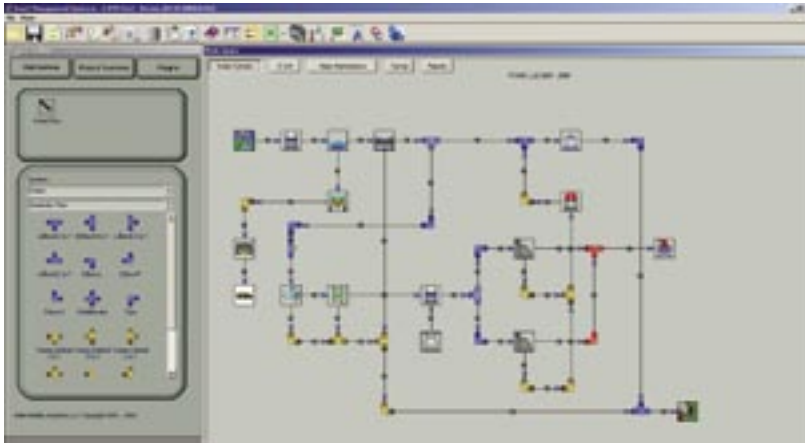




AMS: Water -- Water Treatment Modeling Software

Data Mobility Systems consultants use our internally-developed, industry-leading Water Treatment modelling software. Critical data is securely and electronically shared between our experts for analysis and review. DMS consultants spend their time reviewing performance and analyzing results rather than acquiring data or building models.



Typical plant modeled in the DMS developed AMS Water Treatment Software.

AMS: Advanced Modeling System, industrial plant software for water, maintenance and O&M.

Be sure... don't be surprised by the operations of your water treatment plant

Virtual Plant Design

- ◆ Creates your plant in a virtual design, complete with systems, piping and flows
- ◆ Virtual Water Sources and Virtual Systems configured to exact plant design
- ◆ Chemistry is by Unit, by Ion - Waste Water characterization is included
- ◆ Both Operating and Capital costs are estimated

Virtual Operations

- ◆ AMS actually runs your plant - virtually. With full recycle loop capability, all chemical characteristics are pre-determined prior to actual plant operation
- ◆ Proposed Chemical Programs or Equipment Modifications are fully evaluated, prior to committing any resources
- ◆ Able to create multiple "What If" scenarios to test several ideas or compare proposals

Reliability - Optimization for your design

- ◆ AMS takes your plant design and determines the reliability of each piece of equipment and the reliability of the entire system
- ◆ Reliability estimates equates design alternatives with cost and reliability for fact-based decision making

FGDs: Flue Gas Desulfurizers

- ◆ AMS models the interaction between flue gases and water in wet FGD scrubbers
- ◆ Determines output of gypsum and the recycle chemistry of the water used
- ◆ Ideal for Coal Plant upgrades to use FGDs



Data Mobility Systems, LLC

358 US Route One ♦ Falmouth, ME 04105 ♦ www.DataMobility.com
US: (207) 781-5700 ♦ info@datamobility.com
Europe: +44 (0)1756 649-033 ♦ infoeurope@datamobility.com